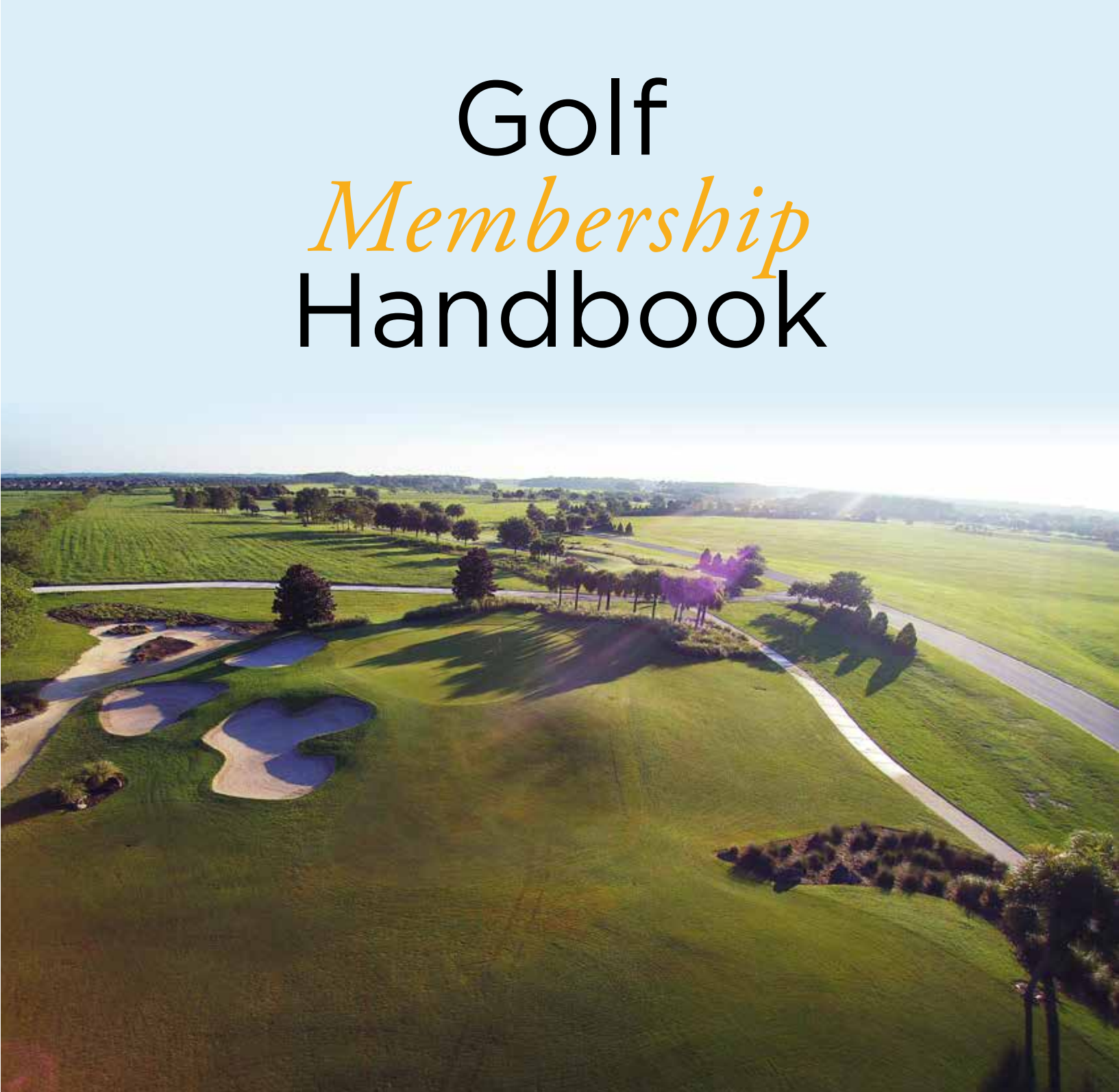




# Golf *Membership* Handbook



8137 SW 90th Terrace Rd.  
Ocala, FL 34481  
352.861.9712  
[www.CandlerHillsGolfClub.com](http://www.CandlerHillsGolfClub.com)



9050 SW 99th Street Rd.  
Ocala, FL 34481  
352.854.8430  
[www.OnTopoftheWorld.com](http://www.OnTopoftheWorld.com)

#11045-07/17



# TABLE OF CONTENTS

	PAGE
Welcome	1
Mission Statement	2
Organizational Flow Chart	2
History of On Top of the World Communities	3
Introduction	3
Golf Committee Description	4
Golf Memberships	4
Conduct and Social Behavior	5
Golf Cart Programs	5
Special Needs	6
Membership Medical Suspension Request	6
Members Selling Their Homes	7
Course Closures & Acts of God	7
Golf Course Cart Use Policy	7
Golf Shop Hours of Operation	8
Dining Facilities & Catering	8
Practice Facilities & Range Programs	9
Gift Certificates & Shop Credit	9
Dress Code Policy	10
Starting Time Policy	10
Pace of Play	11
Handicaps	11
Handicap Committee	11
Rain Check Policy	12
On Top of the World Men's Golf Association	12
On Top of the World Ladies Golf Associations	13
Candler Hills Men's Golf Association	13
Candler Hills Ladies Golf Associations	14
Two Free Rounds of Golf	15
World Passport	15
Loss of Membership Card	15
Waiver of Liability/Informed Consent	16

# WAIVER OF LIABILITY/INFORMED CONSENT

For myself, my heirs and assigns, I hereby expressly release On Top of the World Communities, Inc., Sidney Colen and Associates Ltd., Parkway Maintenance and Management Co., On Top of the World Real Estate, Inc., and any of their agents, servants, and employees from all responsibility of liability to me from any damage, injury or illness that might be sustained while utilizing any of the facilities and/or equipment within the amenities of On Top of the World Communities.

This instrument shall also act as a full and complete release of any and all liability to On Top of the Communities, Inc., Sidney Colen and Associates Ltd., Parkway Maintenance and Management Co., On Top of the World Real Estate, Inc. and any of their agents, servants, and employees as a result of attendance or use of any amenity at On Top of the World Communities.

On Top of the World Communities reserves the right to amend these policies and procedures as deemed necessary, with a 60 day notice.

# ACCEPTANCE OF MEMBERSHIP HANDBOOK AND ALL RULES AND REGULATIONS

_____	_____	_____
Member Name (printed)	Member Signature	Date
_____	_____	_____
Member Name (printed)	Member Signature	Date

Received by: \_\_\_\_\_  
Golf Staff Signature

# WELCOME

## FROM THE DIRECTOR OF GOLF...

The golf course staff would like to welcome you to the On Top of the World and Candler Hills golf clubs. The goal of the golf operations team is to create an enjoyable golf atmosphere for you no matter which of the three golf courses you are playing.

We strive to accommodate golf club members, On Top of the World Communities residents, and non-resident guests with their golf requests. Both facilities offer league competition in the Men's Golf Associations and the Ladies 9 Hole or Ladies 18 Hole Golf Associations. A yearly tournament schedule features events throughout the year designed to enhance the camaraderie among the golfers while at the same time providing different tournament formats.

Before teeing off at either golf club, the golf staff asks that you register for play in the appropriate golf shop. The golf course policies and procedures outlined in this handbook are designed to maximize your golf experience - please review them and let us know if you have any questions.

The World Passport is a card that is a great compliment to your golf membership. You'll enjoy delicious, healthy fare and receive a discount on menu items at our two restaurants and golf courses.

Thank you for choosing the On Top of the World golf courses for your place in the golf world!

Kindest regards,

Matt Hibbs, Director of Golf

## FROM THE GOLF COURSE SUPERINTENDENT...

On behalf of the golf course maintenance team, I want to thank you for joining us at On Top of the World Communities. We are very proud of our facilities and strive to keep the courses in the best condition possible.

It is very important that we enlist the membership to help us keep the courses in top shape. The proper and timely repair of ball marks on the greens is vital in keeping putting surfaces smooth and healthy. Filling divots on tees and fairways will speed recovery and provide a smooth surface. Obeying all cart rules by following directional signs and maintaining all four wheels on the cart path around tees and greens will limit the amount of wear and tear to our rough and surrounding areas.

In addition, throughout the year we will perform some necessary maintenance practices that will aid in the long term conditioning of the golf course. Beginning in May and throughout the summer months, the golf courses will be aerified several times. Aerification reduces compaction from foot and cart traffic, removes thatch and organic matter and allows for water, air and nutrients to penetrate into the root zone. During this process all tees and fairways will be verticut to remove thatch and stimulate new leaf tissue and growth. In order to perform these practices safely and quickly, the golf courses will be closed during these processes, but we will always give advance notice in an attempt to be less disruptive to your game.

We appreciate your comments and look forward to seeing you on the course.

Andy Jorgensen, CGSAA

# MISSION STATEMENT

The mission of the On Top of the World and Candler Hills Golf Courses is to provide residents, golf club members and guests with an enjoyable golf experience by providing the utmost in customer service; a professional staff skilled in merchandising, teaching and club fitting; and a tournament schedule that affords competition to golfers of all ability levels.

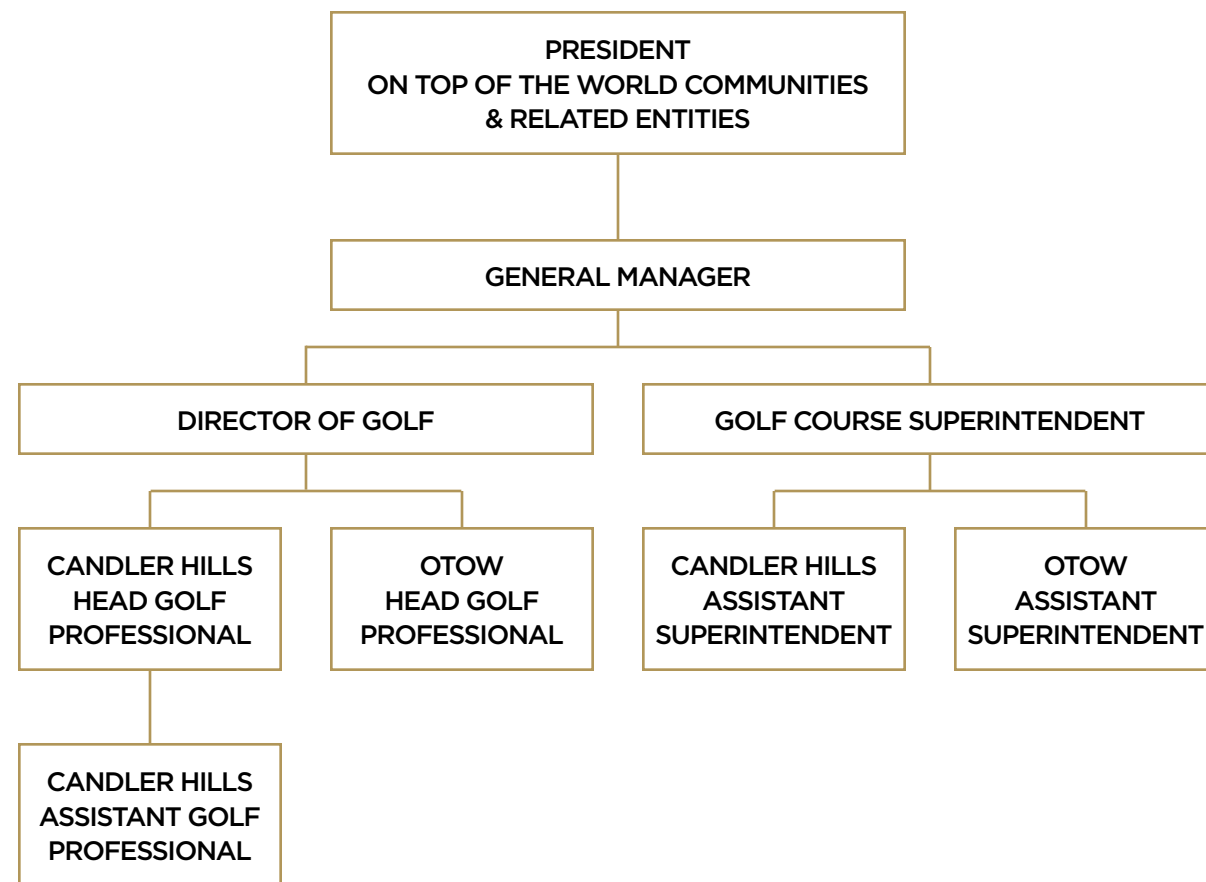
# FOUR FREE ROUNDS OF GOLF

Residents who are an On Top of the World Golf Club or a Candler Hills Golf Club Member receive four complimentary rounds of golf per calendar year at the other golf club\*. These rounds may only be used by the member for his or her personal use. These rounds may not be used towards participation in golf tournaments and outside events, but rather only for individual daily play. Once these rounds have been used, a golf club member does receive a preferred daily rate at the other golf club.

\*Indigo East residents must be a Gateway of Services pass holder in order to golf at the On Top of the World Golf Club and/or dine at The Pub.

# WORLD PASSPORT PROGRAM

All golf members will receive a World Passport Card. The World Passport card is a reloadable cash card that you can use just like cash at the Candler Hills and OTOW Golf Courses, The Club at Candler Hills, Sid's Coffee Shop and Deli and The Pub. You may purchase the card at any of these locations, as well as Customer Service. The card comes preloaded with \$50 at time of purchase and can be reloaded with a minimum of \$25, increasing in increments of \$5 with no maximum. With the card you will also enjoy a 5% discount on select items at the golf shops, not including sale priced items, a 10% discount on all food and a 5% discount on all beverages at the restaurant. To receive the discount you must use the World Passport to pay for the entire purchase. Ask staff about the World Passport Gold Card upgrade for additional benefits.



# CANDLER HILLS LADIES GOLF ASSOCIATIONS

## **18-HOLE LADIES GOLF ASSOCIATION:**

The Candler Hills 18-Hole Ladies Golf Association (LGA) provides an opportunity for women to play 18 holes of friendly, competitive golf while enjoying the friendship of other lady golfers.

Various tournament formats are played every Thursday morning. Events are played as individual or team play. Play will be a shotgun start at 9:00 A.M.; however, there may be variation by season and commitments by the golf course. Players must sign up at the Candler Hills Golf Shop by 5 P.M. the Tuesday prior to each Thursday game. Each player must have an established USGA handicap.

There is an annual membership fee for a full year and also a membership fee for our resident snow birds. For more information please contact the membership chairperson.

## **9-HOLE LADIES GOLF ASSOCIATION:**

The Candler Hills 9-Hole Ladies Golf Association (LGA) was formed because of the many women who want to play golf. This league began November 1, 2008 and had 44 paid members.

The ladies play on Thursdays, with tee times starting at 9:00 A.M. Any member wishing to play must sign up in the golf shop by 5:00 P.M. on Tuesday in order to play on Thursday. Each player must have a USGA handicap.

# HISTORY

Before the population boom of the early 20th century, Florida was comprised of pastures, forests, farmland and lakes. By 1844, settlers started moving into the newly established area called Marion County. The railroad followed settlers to Central Florida and spurred on the timber, mining and cattle industries. At the end of the 19th century, cattle and horse ranching had become a large-scale industry in Florida. The rich grazing pastures and rolling hills of Marion County were extremely desirable. One of the grandest ranches to put down roots in this splendid area was Circle Square Ranch, established in the early 1940s by James Norris, a former grain operator and steamship line owner. The city that would build itself up around this ranch was Ocala, one of the fastest growing cities in one of the fastest growing states. The green pastures of the area became a showplace for visitors, and breeders came from all over the world to buy the ranch's prize cattle stock. Circle Square Ranch continued under Norris' operation until December 1975, when Sidney Colen, one of Florida's premier developers, purchased the 12,900-acre property.

Since that time, the Colen family's vision has been to develop this land in a way that combines innovative, superior lifestyle and environmental stewardship with small-town charm. The three 18 hole golf courses at On Top of the World Communities provide the cornerstone of the extensive recreational opportunities available. Labor Day, September, 1982, witnessed the opening of The Links golf course, later followed by the Tortoise & The Hare golf course. Candler Hills Golf Club, a Gordon Lewis design, opened January 21, 2005. The name "Candler" is derived from the area's sandy soil known as "candler sand." The antique water pump on the twelfth hole of Candler Hills Golf Club is reminiscent of Circle Square Ranch's by-gone cattle driving days.

Great care has been taken to protect the heritage and environmental integrity of this property for the benefit of all who will partake of its pleasures now and in the years to come.

# INTRODUCTION

Welcome to the golf facilities at On Top of the World Communities. The golf staff from both the On Top of the World Golf Club and the Candler Hills Golf Club look forward to serving you. The purpose of this handbook is to acquaint you with the many programs, events, rules and benefits available. As policies and procedures change, and as events are added to our monthly calendar, you will be informed via the World News monthly newspaper and the web sites [www.CandlerHillsGolfClub.com](http://www.CandlerHillsGolfClub.com) and [www.OnTopoftheWorldGolfClub.com](http://www.OnTopoftheWorldGolfClub.com) (click on the links for OTOW Golf or Candler Golf). Our goal is to extend the service that one would expect to enjoy and experience at any of the top 100 facilities. It is our desire to enable our membership to be very proud of their golf courses and the activities that are offered at On Top of the World Communities.

[www.OnTopoftheWorldCommunities.com](http://www.OnTopoftheWorldCommunities.com)

## GOLF COMMITTEE DESCRIPTION

The General Manager, Director of Golf, Head Golf Professional and the Head Golf Course Superintendent will form the committee to review, update and amend the rules governing the operation of the On Top of the World golf courses and their facilities.

Each course has an advisory board comprised of members and employees. The Board consists of the presidents of the Men's Golf Association, the Ladies 18-Hole Golf Association, the Ladies 9-Hole Golf Association, and a member at large who are fully paid golfing members, in good standing, at the respective clubs. The company is represented by the Director of Golf, Head Golf Course Superintendent, Head Golf Professional, Assistant Golf Professional and a Food and Beverage representative. The minutes are posted at the club for the membership to read. The Board meeting is held once a month: Candler Hills Golf Club meets the first Wednesday in the Candler Community Center at 2:00 P.M.; On Top of the World Golf Club meets the second Wednesday in the Members' Lounge at 2:00 P.M.

## GOLF MEMBERSHIPS

The annual golf memberships at On Top of the World and Candler Hills golf clubs are valid January 1 through December 31 of the calendar year. Memberships will be pro-rated only for new residents or residents who have not been golf members within the last three (3) years. Membership fees are non-refundable and non-transferable except in the event of a member home sale as described under "MEMBERS SELLING THEIR HOMES." Members of On Top of the World Golf Club must be a resident of On Top of the World Communities. Resident of the Indigo East neighborhood, must be a Gateway of Services pass holder. A Single Golf Membership is defined as one adult; a Couple Golf Membership is defined as two adults sharing the same address and residing in the same household. Dependent children whose parents have purchased an Annual Couple Membership, meet the age restriction of the rules of the Association, have not reached the age of 24, and are full time students will qualify to be included in their parents' membership as a golf member.

In order to receive resident golf privileges and rates, one must be personally identified as an On Top of the World Communities resident or tenant resident by presenting a current resident identification card.

### ON TOP OF THE WORLD GOLF CLUB\*

The On Top of the World golf courses, The Links and The Tortoise & The Hare, are both private golf courses. Residents of On Top of the World Communities may opt for either an annual or six month membership.

Six month memberships are available at the On Top of the World Golf Club and are not pro-rated. The term of your membership will be a consecutive six months from the date that you join. Membership fees are non-refundable and non-transferable.

### CANDLER HILLS GOLF CLUB\*

Candler Hills Golf Club is a semi-private golf course. Annual membership packages are available to On Top of the World residents, as well as to other area golfers. Corporate memberships are also available. Six month memberships are available at Candler Hills Golf Club and are not pro-rated. The term of your membership will be on a consecutive six months from the date that you join. Membership fees are non-refundable and non-transferable.

### WORLD GOLF MEMBERSHIP\*

The World Golf Membership affords the On Top of the World resident golf privileges at the On Top of the World Golf Club and the Candler Hills Golf Club. Both single and couple memberships as well as trail fee packages are options offered to residents. Indigo residents must be a Gateway of Services pass holder in order to purchase this membership. As with all annual memberships, this will be valid from January 1 through December 31 of the current year.

\*Please refer to Golf Rate Brochure for applicable fees.

## ON TOP OF THE WORLD LADIES GOLF ASSOCIATIONS

### 18-HOLE LADIES GOLF ASSOCIATION:

The On Top of the World 18-hole Ladies Golf Association (LGA) was organized to:

- Promote interest and good sportsmanship in the game of golf.
- Provide opportunities for friendly golf competition and improvement of golf skills.
- Provide opportunities for women to get together with others who share their enthusiasm for golf.

The ladies play weekly tournaments on Tuesdays. Starting time varies by season.

There is a general meeting once a month which is sometimes combined with a luncheon.

### 9-HOLE LADIES GOLF ASSOCIATION:

The 9-Hole Ladies League plays on Tuesdays. There is an annual membership fee to join the league. In order to join the ladies on their play day you must have entered five (5) scores in the handicap system computer to acquire a handicap. A fee for joining the handicap system is also charged annually. Members are to sign up for play day in the Golf Shop by 5:00 P.M. on Monday. For cancellations after 5:00 P.M. on Monday members are requested to call the Tournament Committee. For cancellations on Tuesday, members should call the Golf Shop at 7:30 A.M.

The official uniform for first Tuesday meeting days, special invitationals and away invitationals is a blue shirt and white shorts, pants or skirt. The shirts which have the OTOW logo on them must be ordered by the 9-hole LGA.

For those ladies who are no longer able to play with us, we have a social membership. Social members are welcome to attend meetings and special events. They do not pay dues nor can they vote. To sign up to become a social member, please notify the membership chairperson.

## CANDLER HILLS MEN'S GOLF ASSOCIATION

The Candler Hills Men's Golf Association (CHMGA) is a non-profit corporation existing under the laws of the State of Florida. Its objective is to conduct golfing events and tournaments for the league members in an environment that promotes good fellowship, sportsmanship and a deeper appreciation for the game itself.

The CHMGA is your opportunity to meet other members in a spirit of friendly competition and to support development and growth of the club. All skill levels are welcome and encouraged to participate. As a way to give back to the community, the CHMGA annually awards a scholarship to a deserving St. John's High School senior scholar/athlete. They also donate to First Tee of Ocala for junior golfers.

All CHMGA members will pay the annual handicap system fees through the Golf Shop. The weekly tournaments are held every Tuesday. Play will be a shotgun start at 9:00 A.M.; however, there may be variations by season and commitments by the golf course. All players should be at the golf shop by 7:30 A.M. Players who have an established handicap and are paid members of the CHMGA are eligible to play. Members must sign up in the Golf Shop by 12:00 P.M. on Monday to be eligible for Tuesday play. If a member signs up and decides not to play, he must call the golf shop no later than 7:15 A.M. on Tuesday morning. If a player does not call in and cancel, they will be ineligible for the next two weekly events.

## RAIN CHECK POLICY

- If a golfer plays less than 4 golf holes he/she will receive an 18-hole rain check.
- If a golfer plays 4 to 13 golf holes he/she will receive a 9-hole rain check
- If a golfer plays more than 14 golf holes he/she will not receive a rain check.
- Should a golfer need a rain check, it will be issued at the respective golf shop.

## ON TOP OF THE WORLD MEN'S GOLF ASSOCIATION

The Men's Golf Association's (MGA) fiscal year shall be from January 1 to December 31. The MGA annual dues are payable by December 1 for the following year. The MGA is a registered club in the state of Florida and is a tax exempt organization.

**WEEKLY EVENTS:** Tournaments are held every Wednesday.

**ELIGIBILITY:** Limited to those players who have an established handicap and are paid members of the MGA.

**SIGN-UP:** (A) Members must sign up in the golf shop by 10:00 a.m. on Tuesday to be eligible for Wednesday play. If you sign up and decide not to play, call the golf shop no later than 7:30 a.m. on Wednesday morning.

**START TIMES:** Shotgun start times for all players; rally at 8:30 a.m.; on the tee box at 9:00 a.m. Tee times are assigned for designated tournaments. Start times and team assignments are posted on Wednesday morning.

**SCORE CARDS:** Signed, witnessed, and dated score cards must be turned in to the Golf Shop following play. Do not enter event scores in the computer. Only gross scores should be recorded on the score card. Incomplete score cards will be grounds for disqualification. Events results are posted on the bulletin boards in the Computer Room and outside. Golf shop credits are issued to the event winners.

### **CAPTAIN'S DUTIES:**

- Collect and pay fees for all team members and pick up score card at Golf Shop.
- Keep score for all team members.
- Ensure rules for the day's event are understood and enforced.
- Ensure completed score card is signed and attested prior to turning it in.

**ERRORS IN ANNOUNCED WINNERS:** If an error is made in determining winners on a league day, the golfer must notify a member of the tournament committee by 4:00 p.m. Thursday of that week.

GPS devices are approved for play in MGA events.

## CONDUCT AND SOCIAL BEHAVIOR

Appropriate social behavior and respectful treatment of others is expected of all staff, golf members, residents and guests while using any of the golf facilities.

In the event of violations of the golf rules, as outlined in the member handbook, or inappropriate social behavior by any person using the golf facilities, revocation of golf privileges may occur.

Violations of inappropriate social behavior and disrespect of others include but are not limited to the following:

- Unsportsmanlike conduct, including abusive language; club throwing; disrespect to staff, volunteers, members, residents or their guests; or abuse of golf course property.
- Physical abuse or threat of physical abuse or verbal abuse towards staff, volunteers, members, residents or their guests.
- Entering onto private property or being disrespectful to property owners.

Should such behavior occur, the following action will occur:

- First violation: Letter of reprimand
- Second violation: One month membership suspension
- Third violation: Termination of membership privileges

In the event of a membership suspension or termination, there will be no refund of unused membership, green fees, trail fees, or dining fees.

## GOLF CART PROGRAMS

### **CART RENTAL:**

A daily cart rental fee is charged to a non-member golfer or a golf member who does not own a private cart nor chooses the annual cart lease program. This fee applies if they are riding in a private cart or company cart.

On Top of the World residents who own a private cart but are not golf members pay a resident rate which includes a trail fee.

### **CART LEASE:**

An annual Cart Lease Program is available at both Candler Hills Golf Club and On Top of the World Golf Courses only. Annual fees are a yearly contract and are non-refundable and non-transferable.

## SPECIAL NEEDS

Residents requiring a disabled person parking sticker must show proof of sticker requirement in the owner's name, as provided by section 320.0848, Florida Statutes, to the Customer Service Department of On Top of the World Communities. A handicap sticker will then be applied to your golf cart. If two players with special needs are in the same foursome, both players will ride in the same cart. Once a handicap sticker has been issued and applied to your cart, when playing golf, you can ask for a flag that will be placed on your cart for that round of golf. These flags are to be returned to the Golf Shop after play.

### HANDICAP FLAG RULES AND REGULATIONS:

- Golfer may drive no closer than 10 yards from the green. Golfer must not drive between a bunker and the putting surface at any time.
- Golfer may park on the side of an elevated tee box. Carts must be kept 10 yards from tee boxes. (Please do not drive on the surface of any tee boxes.)
- Golfer may cross the fairways on the par 3's.
- When the "Carts on Cart Path Only" rule is in effect for the entire golf course due to extreme weather conditions, no golfer will be permitted to drive on or across fairways.
- Golfer may not take a cart into a bunker or waste area.
- Golfer is requested to stay on cart paths whenever possible.

## MEMBERSHIP MEDICAL SUSPENSION REQUEST

Should a current annual golf member of one of the On Top of the World golf courses become incapacitated during that year, there are several conditions that must be met before receiving consideration to obtain credit for this time period towards the following year's membership fees:

- Within two (2) weeks of sustaining an accident or a medical condition, the member must submit written documentation describing the condition which prohibits golf activity to the Director of Golf.
- The severity of the accident or medical condition must prohibit play for a minimum period of ninety (90) days.
- A physician's statement must be submitted stating the nature of the accident or medical condition including when the treatment began and when the patient was released.
- The Director of Golf will notify the member if the condition warrants a credit of membership fees towards next year's membership dues.
- No golf or driving range use may be played during the time of membership suspension.
- The Director of Golf must be notified before the member returns to any golf participation. All requests for credit will be reviewed by the golf department and must be approved by this department before any credit for the following year will be issued.

NO REFUNDS will be issued for a membership suspension, except in the event of death for a current golf member. If there is a couple membership, the remaining member will receive a credit towards their following year's membership fees.

## PACE OF PLAY

Pace of play is expected to be four (4) hours or less at The Links or The Tortoise & The Hare. Candler Hills Golf Club has a pace of four (4) hours and twelve (12) minutes. All golfers are expected to keep up with the group ahead.

## HANDICAPS

All golfers who play in any golf event must have a verifiable handicap. All golfers who play in a Club event must join the Handicap System and pay applicable fees.

The Handicap System Membership term runs January 1 through December 31 and is included with your annual membership. The Handicap System allows the golfer to post scores at either On Top of the World Golf Club or Candler Hills Golf Club.

## HANDICAP COMMITTEE

The Handicap Committee of On Top of the World and Candler Hills Golf Clubs ensures compliance with the USGA Handicap System. Members of all men's and ladies' golf associations as well as members at large make up this committee.

The Handicap Committee will handle any disciplinary matters concerning golfers score posting and handicap issues.



## DRESS CODE POLICY

The dress code policy for the On Top of the World Golf Club and Candler Hills Golf Club includes the golf course, the short game practice facility, the putting greens and the driving ranges. This dress code is for golfers and spectators at either facility.

### **MEN:**

Shirts with sleeves and collars.

Slacks or mid-length shorts (not more than 3" above the knee).

### **LADIES:**

Blouses with a collar (not required to have sleeves).

Blouses without a collar must have sleeves.

Mid length shorts may not be more than 3" above the knee.

### **THE FOLLOWING ATTIRE IS PROHIBITED:**

Denim of any kind, sweat pants, knit or basketball shorts, jams, swim suits, cut offs, flip flops, soccer or football shoes, and boots.

## STARTING TIME POLICY

All residents and their guests are welcome!

### **ON TOP OF THE WORLD GOLF CLUB:**

The general rule for the On Top of the World golf courses is "first come, first served."

Golfers must have all three fellow competitors present before registering in golf shop. Golf Shop staff will assign starting order based on designated golf course.

On occasion, the golf shop staff will have the need to regulate starting times to hold a special event. When some type of golf course maintenance is scheduled, it may also be necessary to regulate starting times. Please reference the monthly calendar and notification signs in the golf shop and on the bulletin boards.

### **CANDLER HILLS GOLF CLUB:**

Tee times begin at 7:30 A.M. Monday through Friday and at 7:00 A.M. on Saturday and Sunday. Scheduled tournaments or leagues may alter starting time availability.

The Golf Shop staff will accept starting time reservations beginning at 7:20 A.M. weekday mornings and 6:50 A.M. on weekend mornings. Each person may enter time requests for one (1) foursome online, 7 1/2 days in advance, starting at 9 P.M. World members may reserve tee times eight (8) days in advance.

Daily fee 9 hole rates are offered at Candler Hills Golf Club after 2:30 P.M. The 9 hole rate may be offered at an earlier time to golfers participating in a recognized golf league - Men's Golf Association, Ladies 18 hole Golf Association or Ladies 9 hole Golf Association.

Candler Hills Golf Club members may reserve tee times with a seven (7) day advance. All On Top of the World Communities residents may reserve tee times five (5) days in advance. All other golfers may book four (4) days in advance.

Every person requesting a starting time must provide all players' names in order to reserve the starting time.

## MEMBERS SELLING THEIR HOMES

In the event a member who has paid his/her annual fees in full sells his/her home, the membership may be transferred to the new home owner with management approval. Golf Department office must be notified in writing a minimum of 30 days prior to closing on real estate transaction. There will be no refunds of pro-rated membership available.

## COURSE CLOSURES & ACTS OF GOD

In the event of course closures from ACTS OF GOD and course maintenance, there will be no reimbursement or pro-rations of memberships.

## GOLF COURSE CART USE POLICY

- While gas powered golf carts are permitted to be used within the On Top of the World residential communities, they are not allowed to be used on any of the On Top of the World golf courses.
- All privately-owned golf carts must be permitted by the Customer Service Department of On Top of the World Communities. If they are not permitted, they will not be allowed on any golf course property.
- Golf carts must remain on the paths on all par 3's on the courses.
- The 90 degree rule applies to all par 4's and par 5's. (The 90 degree rule is a method that will minimize the amount of time the golf cart will be driven on the turf. Only when the player is directly across from their ball will they leave the cart path and proceed to their ball. After the shot is taken the player will return directly to the cart path. If it is not practical to do this in order to get to your partners ball then proceed to his/her ball directly.)
- ONE CART FOR A SINGLE OR TWOSOME, AND TWO CARTS FOR A THREESOME OR A FOURSOME WILL BE PERMITTED. A maximum of two bags and two riders are allowed per golf cart, regardless of the number of seats available. Any play outside of this would be at the discretion of the golf professional. To operate a golf cart on any of the three courses, the driver must be at least 18 years of age and have a valid driver's license.
- Private carts must observe golf course cart restrictions which may be in effect due to abnormal ground conditions.
- Should a private cart become disabled on the golf course, the golf staff is not permitted to tow the cart back to the clubhouse. Carts can sustain damage if improperly towed.

### **CANDLER HILLS GOLF CLUB**

- Golf rental carts are not allowed in the parking lot of Candler Hills Golf Club.

### **INDIGO EAST RESIDENTS**

- Privately owned golf carts are permitted to cross at the intersection of SW 80th Avenue and SW 80th Street only.
- Residents have the option to participate in the Annual Cart Lease Program or pay the daily cart fee.

## GOLF SHOP HOURS OF OPERATION

### **ON TOP OF THE WORLD GOLF CLUB:**

Year Round: Open 7:00 A.M. and Close 5:00 P.M.

### **CANDLER HILLS GOLF CLUB:**

Year Round: Open 7:00 A.M. on weekdays and 6:30 A.M. on weekends.

November 1 – April 30: Close weekdays and weekends at 5:00 P.M.

May 1 - October 31: Close weekdays and weekends at 5:30 P.M.

### **SPECIAL HOLIDAY HOURS:**

New Year's Eve – 7:00 A.M. to 3:00 P.M.

New Year's Day – 8:00 A.M. to 2:00 P.M.

Thanksgiving Day – 7:00 A.M. to Noon (Club owned carts must be returned by 2:00 P.M.)

Christmas Eve – 7:00 A.M. to 2:00 P.M.

Christmas Day – Closed all day

**ANY OTHER CLOSINGS WILL BE POSTED IN ADVANCE.**

## DINING FACILITIES & CATERING

### **THE PUB:**

The Pub Restaurant is located in the Recreation Center adjacent to the On Top of the World Golf Shop. For hours of operation, menu and daily specials, call 352-854-0761 or visit [www.otowinfo.com](http://www.otowinfo.com).

### **THE CLUB AT CANDLER HILLS:**

Candler Hills Restaurant is located adjacent to the Candler Hills Golf Shop. For hours of operation and menu, call 352-861-9720 or visit [www.otowinfo.com](http://www.otowinfo.com).

### **SID'S COFFEE SHOP AND DELI:**

Sid's Coffee Shop and Deli is located in Circle Square Commons. For hours of operation and menu, call 352-387-7402 or visit [www.otowinfo.com](http://www.otowinfo.com)

### **FRIENDSHIP CATERING:**

Friendship Catering is available to cater food and beverage for all of your group needs. Contact the Hospitality Department at 352-861-9130 to arrange a professionally catered food and beverage event.

NOTICE: The state of Florida alcohol beverage licenses for these facilities do not permit the consumption of alcohol not purchased on site.

## PRACTICE FACILITIES & RANGE PROGRAMS

All Golf members will receive a range membership to their respective golf range. Range members receive a "card" to use at the ball machine, located at the range. Should the member lose or damage this card a replacement charge of \$20 will be paid by the member. All Range Members are asked to return the card if not renewing, at year's end to avoid a \$20 card fee.

A Single or Couple Annual Program is available. Memberships will be pro-rated only for new residents or residents who have not been a golf range member within the last three (3) years.

The club at which you join the range is the only facility that will honor the membership. This does not entitle the use of practice facilities at both clubs.

The range may close early on certain days in order to have the range picked clean. The Golf Shop will have the scheduled times posted. This is necessary to accommodate mowing of the range the following morning.

Please leave all baskets and range balls that are not hit on the range. Range baskets, balls and tokens are not to leave the practice facility and travel home with you. Abuse of this rule may result in suspension of your membership.

## GIFT CERTIFICATES & SHOP CREDIT

### **GIFT CERTIFICATES AND CASH CARDS:**

Gift certificates/cash cards are available to all who wish to purchase them in the Golf Shop. Gift certificates have no expiration date. The Golf Shop staff is ready to assist any member that might need personal attention for special orders.

### **GOLF SHOP CREDIT:**

Golf Shop credit is awarded to sporting event winners. This credit is derived from the entry fee. The shop credit expires on the last day of February of each year.

Shop credit may only be used for merchandise. It is not valid for Greens Fees, Cart Fees, Membership Fees, Range Balls, Golf Lessons, or food and beverages.

Shop credit will be issued in the form of chits for all amateurs playing in the weekly sporting events of the MGA League, the LGA Leagues, as well as special sporting events. The chits will be added to the golf member's account until he/she decides to redeem them in the golf shops. For those players who are not On Top of the World residents, the chits will be distributed the day of the sporting event. Chits may be combined with husband/wife accounts. Chits may not be reassigned to other individuals.